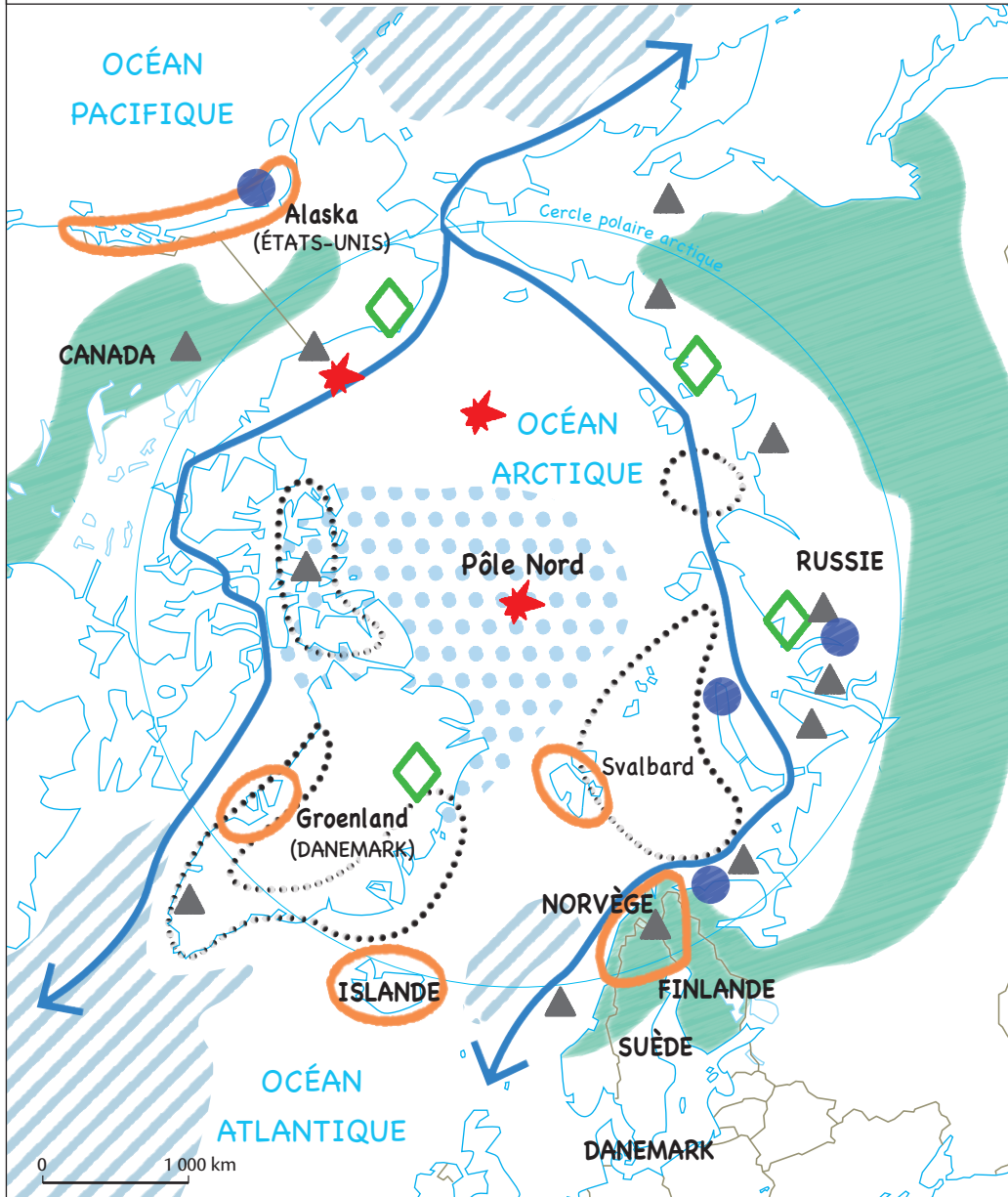








L'Arctique : un espace fragile et attractif en transition






1. Les environnements de l'Arctique :

-  Forêt boréale
-  Ressources énergétiques et minérales

2. Le changement climatique, facteur

-  estivale en voie de réduction
-  Attractivité touristique croissante
- 
-  Prospection minière, pétrolière et gazière

3. L'exploitation de l'Arctique :

-  Écosystèmes pollués
- 
-  Litiges frontaliers